

YANWA



MOTOR GRADER

IS A POWERFUL ROLLER THAT GUARANTEES VERY UNIFORM COMPACTION RESULTS THANKS TO A BALANCED WEIGHT DISTRIBUTION ON THE FRONT AND REAR DRUMS REAR. IT OFFERS HIGH DRIVING STABILITY AND IS EASY TO MANEUVER. PERFECT VISIBILITY OF THE AREA TO BE COMPACTED AND THE LARGE DIAMETER OF THE DRUM ALSO CONTRIBUTE TO OBTAIN TOP QUALITY RESULTS.





CONBINED ROLLER

YWA-CR-45-1.3

CHARACTERISTICS

INTERNAL COMBUSTION ENGINE

BRAND	YANWA
MODEL	Y2417-RC
DISPLACEMENT	2417,0 CM ³
RATED POWER	33,5 KW (45 HP)
RPM NUMBER	2600,0 RPM
BATTERY VOLTAGE	12 V
BATTERY CAPACITY	95,0 AH
NUMBER OF CYLINDERS	4 IN LINE
SWITCHED ON	ELECTRIC/MANUAL

MECHANICAL PERFORMANCE

GRADEABILITY	30%
VELOCITY OF DISPLACEMENT	0,0 -10,6 KM/H
COMPACTION FORCE	70 KN
VIBRATION FREQUENCY	60HZ
NOMINAL AMPLITUDE	0,5100 MM
CENTRIFUGAL FORCE	58 KN
COMPACTION DEPTH	50 CM

FUEL, COOLANT

WATER TANK CAPACITY	260,0 L
FUEL TANK CAPACITY	73,0 L
FUEL TYPE	DIESEL





MECHANICAL DATA

LENGTH	2720,0 MM
WIDTH	1462,0 MM
SERVICE WEIGHT	4000,0 KG
WORKING WIDTH	1300 MM
ROLLER DIAMETER	800 MM
MINIMUM TURNING RADIUS	3062/4362 MM
DISTANCE BETWEEN AXIS	1950,0 MM
NUMBER OF REAR COMPACTION WHEELS	4 REAR WHEELS
INCLINATION ANGLE	±10°
DIAMETER REAR WHEELS	800 MM
REAR WHEEL WIDTH	214 MM

ROLLER BEARINGS	CYLINDRICAL SINGLE ROW STEEL, SEGMENTED RETAINER N7314 INTERNAL DIAMETER 70MM EXTERNAL DIAMETER 150MM BEARING WIDTH 43.00MM
-----------------	---

ENVIRONMENTAL PARAMETERS

SOUND PRESSURE LEVEL LPA	88,0 dB(A)
NIVEL DE POTENCIA ACUSTICA LWA	106,0 DB(A)
EXHAUST GAS AFTER TREATMENT	DOC-DPF
CATALYST	YES
PARTICLE FILTER	YES
CO (NRTC)	0,1 G/KWH
CO2 (NRTC)	834,6 G/KWH
HC + NOx (NRTC)	3,0 G/KWH
PM (NRTC)	0,0 G/KWH

METRIC SERIES CYLINDRICAL ROLLER BEARINGS ARE MANUFACTURED TO ABMA BOUNDARY DIMENSIONS. THESE BEARINGS REQUIRE MINIMUM SPACE AND PROVIDE MAXIMUM RATED CAPACITY. VARIOUS CONFIGURATIONS INCLUDING SEPARABLE INNER OR OUTER RING COMBINATIONS OFFER AMPLE APPLICATION FLEXIBILITY.



HIGH QUALITY RINGS

RINGS OF HIGH QUALITY BEARING STEEL FOR STRENGTH, TOUGHNESS AND DURABILITY.

MICROFINISHED RACEWAYS ASSURE SMOOTH OPERATIONS

OPTIMIZED RACEWAY CONTACT AREA

EXCLUSIVE HONED CROWN ON ROLLER PROFILE FOR OPTIMIZED RACEWAY CONTACT AREA AND HIGH CAPACITY.

POSITIVE ROLLER SPACING

- STRUCTURAL DESIGN SEGMENTED RETAINER PROVIDES HIGH STRENGTH, POSITIVE ROLLER SPACING AND GUIDANCE.
- ONE-PIECE FORMED STEEL RETAINER PROVIDES POSITIVE ROLLER SPACING AND CONTROLLED ROLLER GUIDANCE.

POLYMERIC RETAINER

POLYMERIC RETAINER OF GLASS FIBER REINFORCED NYLON 6/6 PROVIDES FULL ROLLER GUIDANCE, SUPERIOR LUBRICATION AND REDUCED NOISE.

SEGMENTED RETAINERS

RIGID STRUCTURAL DESIGN SEGMENTED STEEL RETAINER PROVIDES HIGH STRENGTH, POSITIVE ROLLER SPACING AND GUIDANCE.

ALL CONTACT SURFACES ARE CONTOURED TO MINIMIZE AND ROLLERS, ASSURING FULL ROLLER LUBRICATION. PRECISION SPACER SEGMENTS CONTACT THE ROLLERS ABOVE AND BELOW PITCH DIAMETER RESULTING IN LOW FRICTION LOSS AND POSITIVE ROLLER CONTROL.



POLYMERIC RETAINERS

MADE OF GLASS FIBER REINFORCED NYLON 6/6, MOLDED POLYMERIC RETAINERS PROVIDE CLOSE CONTROL OF ROLLER "DROP," LOW NOISE, FULL ROLLER GUIDANCE AND SUPERIOR LUBRICATION, AT A COMPETITIVE PRICE. EXTENSIVE TESTING HAS ESTABLISHED COMPATIBILITY WITH A BROAD RANGE OF STANDARD LUBRICANTS AND SATISFACTORY OPERATION AT SUSTAINED TEMPERATURES TO 275°F.



FORMED STEEL RETAINERS

ONE-PIECE DEEP COINED FORMED STEEL RETAINER COMBINES STRENGTH WITH POSITIVE ROLLER SPACING AND ROLLER GUIDANCE. THE RETAINER GUIDES THE ROLLERS BELOW THE PITCH LINE AND PROVIDES CONTROL OF ROLLER DROP. LINE CONTACT OF ROLLERS ON GUIDANCE SURFACES MINIMIZES WIPING ACTION AND PROMOTES HYDRODYNAMIC LUBRICATION.



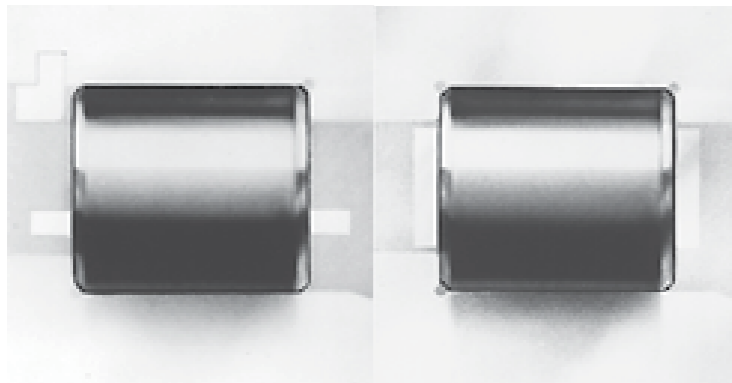
OPTIONAL SERIES AND CONFIGURATIONS

SERIES M CYLINDRICAL ROLLER BEARINGS ARE AVAILABLE IN SEVEN SERIES WITH SEGMENTED RETAINERS, FIVE SERIES WITH FORMED STEEL RETAINERS, SEVERAL SERIES WITH POLYMERIC RETAINERS, AND FIVE SERIES OF THE FULL ROLLER COMPLEMENT TYPE. VARIOUS CONFIGURATIONS, INCLUDING SEPARABLE INNER OR OUTER RING COMBINATIONS ARE OFFERED.



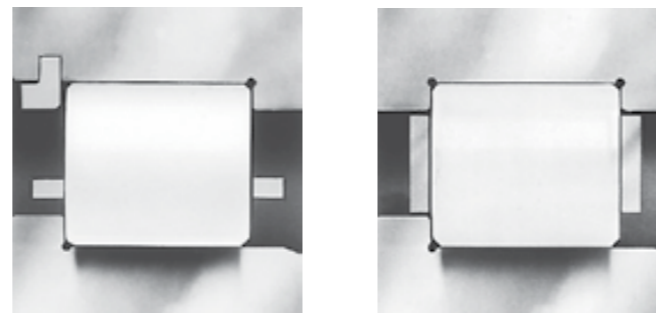
ROLLERS

EXCLUSIVELY CROWNED HONED ROLLERS PROVIDE OPTIMIZED CONTACT AT THE RACEWAY. THIS ASSURES EFFICIENT BEARING PERFORMANCE UNDER LOAD, PROVIDES CONTROLLED STRESS DISTRIBUTION UNDER ALL LOADS WITHIN THE DESIGN CAPACITY AND COMPENSATES FOR SHAFT DEFLECTION.



RINGS

RINGS ARE MANUFACTURED FROM HIGH QUALITY BEARING STEEL TO ENHANCE FATIGUE RESISTANCE, STRENGTH, TOUGHNESS AND HARDENABILITY.

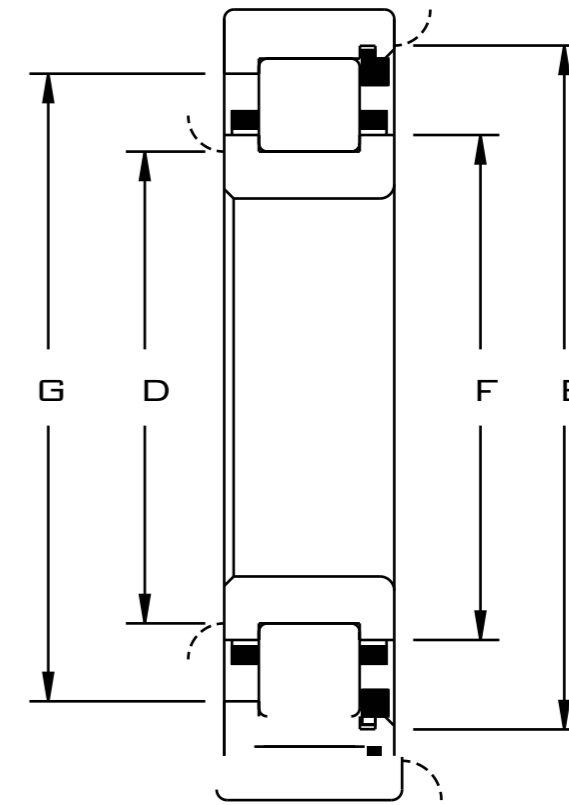
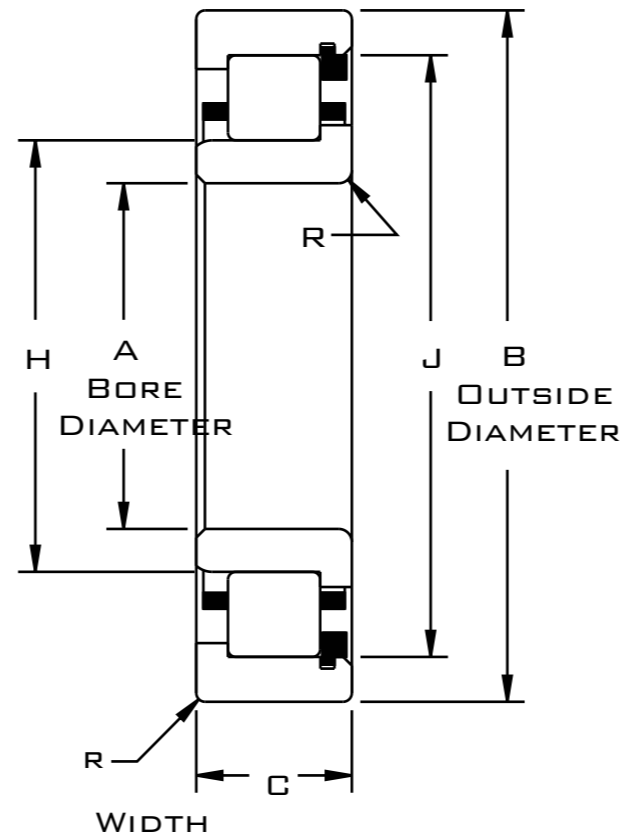


BEARINGS AND RING AND ROLLER ASSEMBLIES FOR OMITTED-RING APPLICATIONS ARE ABMA STANDARD BOUNDARY PLAN FOR BORE, OUTSIDE DIAMETER, AND WIDTH... STANDARD TOLERANCES ARE RBEC-1. PRECISION TOLERANCES TO RBEC-5 ARE AVAILABLE.



PHOTO SHOWS AN UNMOUNTED CYLINDRICAL ROLLER BEARING ASSEMBLY

- FULLY CROWNED ROLLERS
- PRECISION GROUND RIBS
- CONTOURED ROLLER POCKETS
- ROLLERS INDIVIDUALLY SEPARATED
- OPTIONAL FULL COMPLEMENT
- SEE FEATURES AND BENEFITS FOR ADDITIONAL INFO ON PAGE 6 - 7



BASIC BEARING NUMBER	A BORE DIAMETER		B OUTSIDE DIAMETER		C BEARING WIDTH		D		E		F	G	H	J	R	R	
	MM	IN	MM	IN	MM	IN	PLAIN	RIBBED	PLAIN	RIBBED							
1912	60.0000	2.3622	85.0000	3.3465	13.0000	0.5118	65.00	66.80	80.30	78.20	69.34	75.92	66.802	78.461	1.02	1.02	
1012			95.0000	3.7402	18.0000	0.7087	67.00	69.30	88.60	85.30	72.69	82.35	69.499	85.534	1.52		
1212			110.0000	4.3307	22.0000	0.8661	69.30	72.10	101.30	97.50	76.94	93.50	72.380	97.762	2.03		1.52
5212			36.5120	1.4375													
1312			130.0000	5.1181	31.0000	1.2205	72.90	77.50	117.80	112.30	84.02	106.35	77.551	112.486	2.54		2.03
7312					38.0000	1.4961											
5312					53.9750	2.1250											
1913	65.0000	2.5591	90.0000	3.5433	13.0000	0.5118	70.10	71.60	85.30	83.30	74.30	80.87	71.755	83.416	1.02	1.02	
1013			100.0000	3.9370	18.0000	0.7087	72.10	74.40	93.70	90.40	77.72	87.35	74.503	90.541	1.52		
1213			120.0000	4.7244	23.0000	0.9055	77.00	80.30	110.00	105.70	85.34	101.24	80.421	105.804	2.54		1.52
5213			38.1000	1.5000													
1313			140.0000	5.5118	33.0000	1.2992	78.70	83.60	127.00	121.20	90.70	114.68	83.675	121.366	2.54		2.03
7313					40.0000	1.5748											
5313					58.7380	2.3125											
1914	70.0000	2.7559	100.0000	3.9370	16.0000	0.6299	75.90	78.00	94.50	92.20	80.82	89.41	77.978	92.268	1.02	1.02	
1014			110.0000	4.3307	20.0000	0.7874	77.50	80.00	103.40	99.80	84.12	95.99	80.188	99.906	2.03		
1214			125.0000	4.9213	24.0000	0.9449	81.80	84.60	115.60	111.50	89.61	107.01	84.772	111.536	2.54		1.52
5214			39.6880	1.5625													
1314			150.0000	5.9055	35.0000	1.3780	84.30	89.20	135.60	129.30	96.72	122.20	89.192	129.375	3.18		2.03
7314					43.0000	1.6929											
5314					63.6000	2.5039											



SERIES EQUIPMENT:

OPERATOR ENVIRONMENT

ADJUSTABLE SUSPENSION SEAT WITH OPERATOR PRESENCE SWITCH

FOLDABLE ROPS

SEAT BELT - 75 MM (3 IN) HI-VIZ ORANGE OPERATOR CONSOLE WITH WATER TANK INDICATOR, EMERGENCY STOP AND GLOVE BOX

12 VOLT OUTLET

HORN, SECURITY ALARM

SISTEMA COMPACTON

FOLDING SCRATCHING POSTS

VIBRATION SELECTION: FRONT, REAR OR BOTH

TRIPLE FILTRATION PRESSURIZED SPRAY SYSTEM WITH TEST MODE

POWER TRAIN

AUTOMATIC ENGINE SHUTDOWN AND WARM-UP

FILTRO DE AIRE, DOBLE ELEMENTO

ENGINE BELT PROTECTOR

FUEL FILTER, WATER SEPARATOR, PRIMING PUMP, WATER GAUGE

TECHNOLOGY

TELEMATICS

ELECTRIC

LED WORK LIGHTS

OTHERS

VANDAL PROTECTION: LOCKABLE HOOD, FUEL FILLER CAP AND CONTROLS

MACHINE LIFE AND FIXTURES

TRAVEL HITCH

OPTIONAL EQUIPMENT

OPERATOR ENVIRONMENT

FIXED ROPS

SUN AWNING

SEAT - LATERAL SHIFT

12 VOLT OUTLET

DUAL PROPEL LEVERS

TECHNOLOGY

REMOTE FLASH / TROUBLESHOOTING

GMV - COMPACTION MEASUREMENT
VALUE

ELECTRIC

BATTERY DISCONNECT

LED ROAD LIGHTS

ROTATING AMBER BEACON

OTHERS

BIODEGRADABLE HYDRAULIC OIL

BUMPERS

ROTATING AMBER BEACON





YANWA