



YANWA
RE970-T



BACKHOE

WE DEVELOP PRODUCTS
AND SERVICES THAT
INCREASE PRODUCTIVITY. WE
ARE CONFIDENT THAT WE
CAN REDUCE COSTS AND
INCREASE BENEFITS
INDUSTRY EXPERTS



BACKHOE RE970-T

CHARACTERISTICS



BACKHOE

BRAND	YANWA
MAKER	YANWA
MODEL	RE970-T
YEAR OF PRODUCTION	2023
ORIGIN	CHINA
OPERATIONAL WEIGHT	8100KG

STANDARD DIMENSIONS

LONG	6970MM
TOTAL WIDTH	2280MM
CABIN HEIGHT	2876MM
DISTANCE BETWEEN AXIS	2210MM

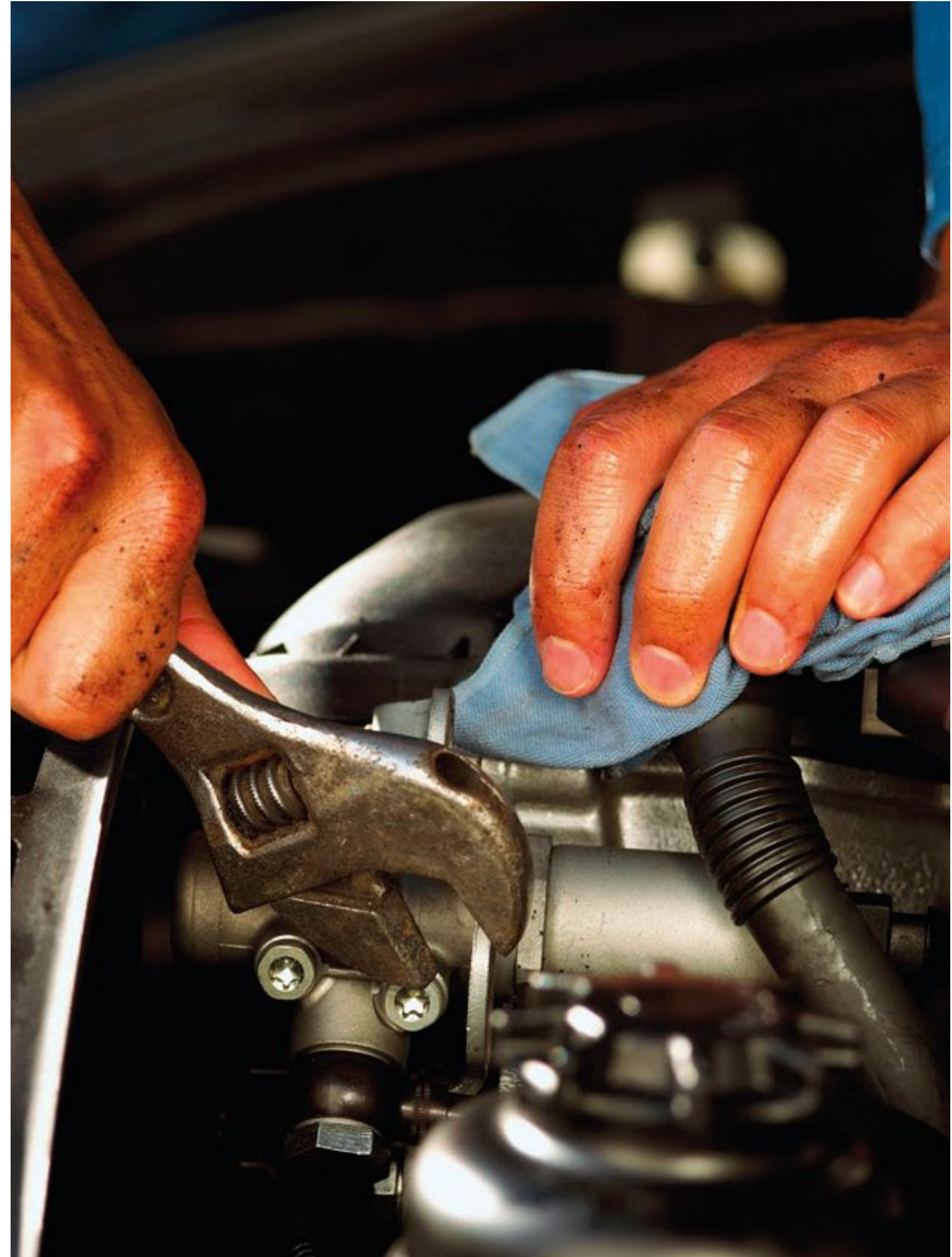
CABIN

CABIN TYPE	CLOSED ROPS (ISO 3741)/FOPS (ISO 3449)
A/C	INCLUDES
ERGONOMIC SEAT	INCLUDES
SEAT BELT	INCLUDES
RADIO (BLUETOOTH)	INCLUDES
NOISE INSIDE THE CABIN	72.3DB(A)
NOISE OUTSIDE THE CABIN	82.4DB(A)



ENGINE

BRAND	CUMMINS
MODEL	QSB4,5-C130
TYPE	4-STROKE INTERNAL COMBUSTION
FUEL	DIESEL
GROSS POWER	130 HP (97 KW)
NET POWER	125 HP (93 KW)
OPERATING REGIME	2200RPM
DISPLACEMENT	4.5L
EMISSIONS SYSTEM	EU STAGE IIIA
CYLINDER CAPACITY	4500CC
MAXIMUM TORQUE (TORQUE)	600 NM @ 1500 RPM
NUMBER OF CYLINDERS	4 IN LINE
INJECTION SYSTEM	HIGH PRESSURE (COMMON RAIL)
AIR SUPPLY	TURBOCHARGED & AIR TO AIR INTERCOOLING
AIR FILTER	DIRECT FLOW
FUEL TANK CAPACITY	140 LITERS
REFRIGERATION	WATER
FUEL PUMP TYPE	MECHANICAL INJECTION PUMP





TRANSMISSION

TRACTION	4WD (4X4)
SPEEDS	4 FORWARD / 4 REVERSE
TOP SPEED 1ST (FORWARD/REVERSE)	5.5 KM/H
MAX SPEED 2ND (FORWARD/REVERSE)	9KM/H
3RD MAX SPEED (FORWARD/REVERSE)	20.7KM/H
TOP SPEED 4TH (FORWARD/REVERSE)	40KM/H
TOP SPEED 4TH (FORWARD/REVERSE)	40KM/H
TURNING RADIUS (OUTER AREA OF FRONT TIRE))	4400MM
TRACTION CONTROL	MANUAL
TRANSMISSION TYPE	SERVO-MECHANICS
TYPES OF CHANGES	HYDRAULICS

ELECTRIC SYSTEM- INCLUDES

VOLTAGE	12 VOLT
BATTERY CAPACITY	95 AH
ALTERNATOR	150A

INCLUDES	WORK LIGHTS (4 FRONT LED LIGHTS / 4 REAR LED LIGHTS) STOP LIGHTS TAIL LIGHTS ELECTRIC HORN BACKUP ALARM WIRING PROTECTIONS IN EXPOSED AREAS
----------	--

HYDRAULIC SYSTEM

PUMP TYPE	TANDEM GEAR PUMP
MAIN RELIEF PRESSURE	24MPa
FLOW (PUMP FLOW)	163 L/MIN
TYPE OF SYSTEM	OPEN CENTER
TYPE OF ADDRESS	PRIORITY VALVE
SYSTEM PRESSURE (BACKHOE)	249 BAR / 253 KG/CM2
SYSTEM PRESSURE (CHARGER)	249BAR / 253KG/CM2
DEPOSIT CAPACITY	130LT
CONTROL TYPE	JOYSTICK TYPE: ELECTRO-HYDRAULIC CONTROL WITH PRESSURE CHANGE VALVE

DIRECTION SYSTEM

TYPE	FRONT - POWER STEERING / HYDROSTATIC
------	--------------------------------------

BRAKES

SERVICE BRAKE	REINFORCED DISC - OIL BATH HYDRAULIC ACTUATOR - DOUBLE PEDAL
PARKING BREAK	INDEPENDENT MECHANICAL / WITH DIFFERENTIAL LOCK



EXCAVATOR ARM

TYPE	HYDRAULIC
CONTROLS	JOYSTICK
DIGGING DEPTH	4440MM
BUCKET CAPACITY (ISO 7451 STANDARD)	0.2 M3
BUCKET WIDTH	610MM
NUMBER OF TEETH	5
REACH FROM PIVOT CENTER	5443MM
DIGGING FORCE	BUCKET: 6390 KGF / 62.66 KN ARM: 3182 KGF / 31.2 KN
LOAD HEIGHT	3886MM
BUCKET ANGLE OF ROTATION	180°

DASHBOARD - INCLUDES

TACHOMETER	INCLUDES
HYDROMETER	INCLUDES
HOUR METER	INCLUDES
SPEEDOMETER	INCLUDES
TEMPERATURE GAUGE	INCLUDES
WARNING LIGHTS	INCLUDES

SERVICE CAPABILITIES

MOTOR OIL	13LT
HYDRAULIC SYSTEM TANK	130LT
FULL HYDRAULIC SYSTEM	170LT
TRANSMISSION AND TORQUE CONVERTER	16LT



CHARGER

TYPE	HYDRAULIC WITH BLADE
CONTROLS	LEVER
LOADER BUCKET CAPACITY	1.2 M3
BUCKET BREAKOUT FORCE	59.3KN
FULL HEIGHT LIFT CAPACITY	3188KG
DRAWBAR LIFTING CAPACITY	49.3KN
BUCKET WIDTH	2446MM
MAX DUMP ANGLE	45° (FULL HEIGHT)
DISCHARGE HEIGHT	2691 MM (MAX ANGLE 45°)

WHEELS

FRONT	DIMENSIONS 14-17.5 CANVAS 14 (PLY) MAX LOAD 3875KG
LATER	DIMENSIONS 19.5L-24 CANVAS 14 (PLY) MAX LOAD 3540KG

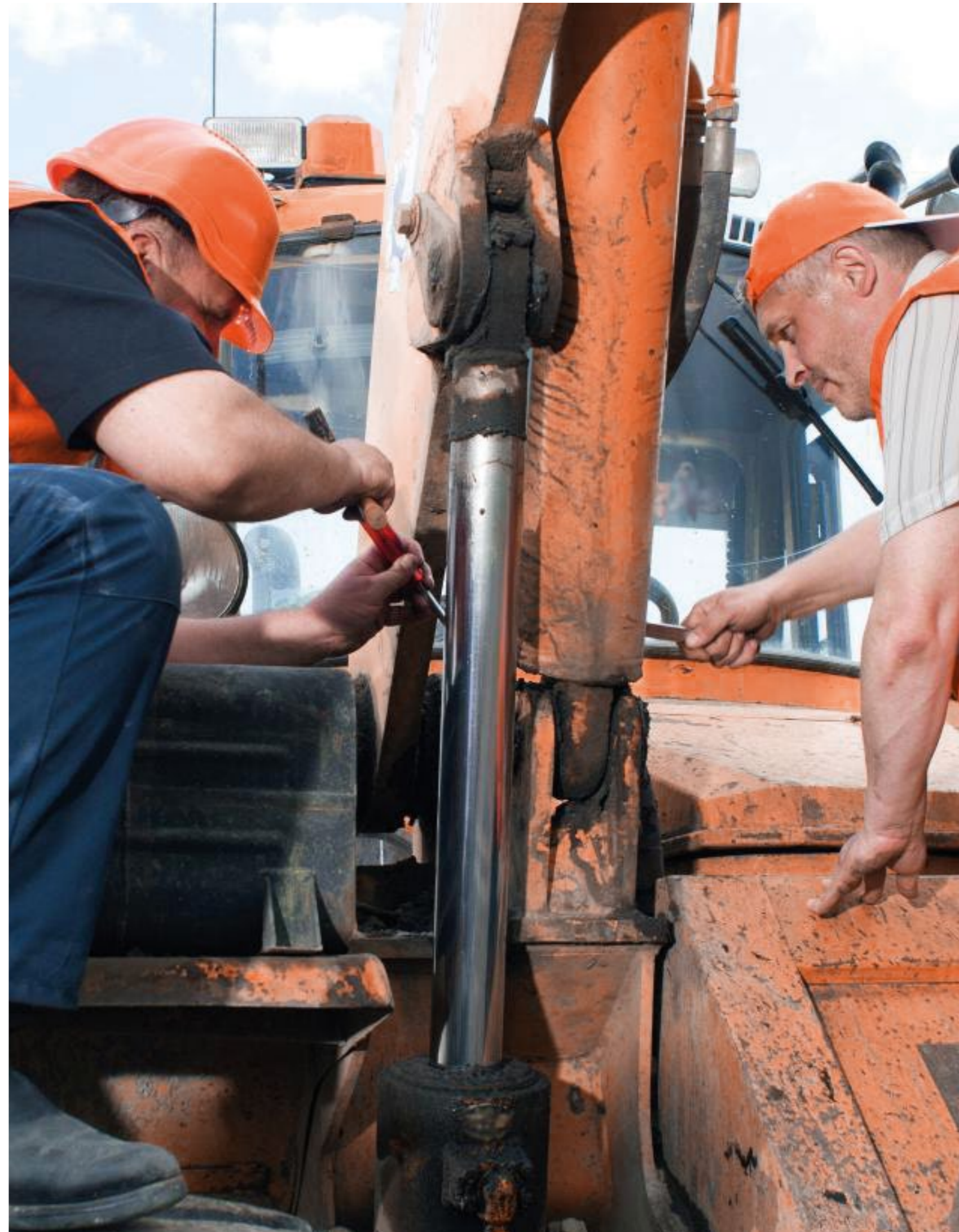
SERVICE CAPABILITIES

MOTOR OIL	13LT
HYDRAULIC SYSTEM TANK	130LT
FULL HYDRAULIC SYSTEM	170LT
TRANSMISSION AND TORQUE CONVERTER	16LT

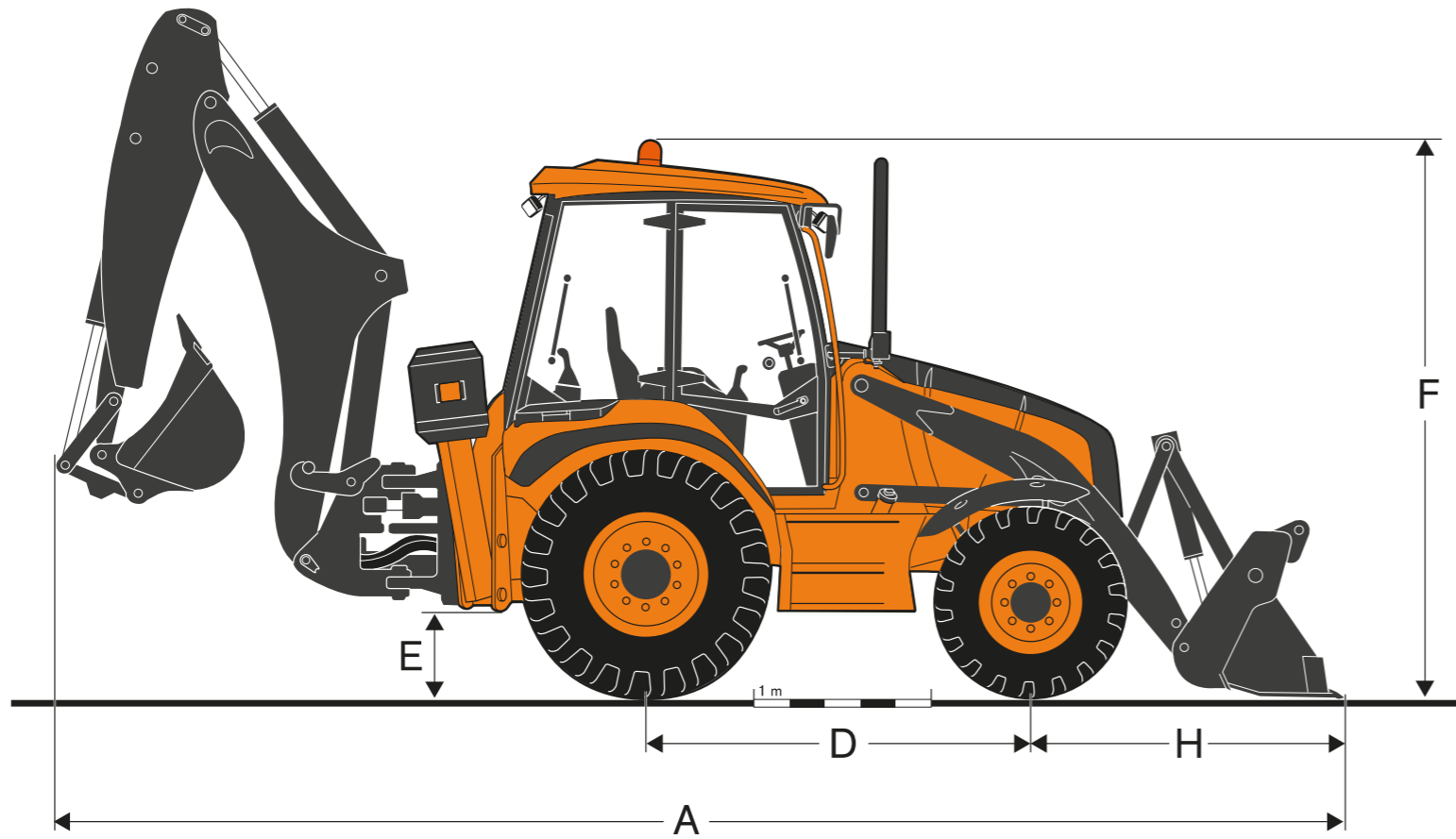


BACKHOE TOOLS

HYDRAULIC BOTTLE JACK	15 TON ACTION LEVER JACK KEY
TYPE I WHEEL WRENCH	32X30 FORCE LEVER
WHEEL LOCK STUDS (2 UNITS)	POLYURETHANE 6,2 KG 39,4X21,6X21 CM (LXAXH)
TOOLBOX	PLIERS SCREWDRIVER PHILLIPS SCREWDRIVER 10" SPANNER COMBINATION WRENCHES (10 TO 23)MM
EXTINGUISHER	PQS TYPE CLASS A,B,C FIRES 10 KG
MEDICINE CABINET	ANTISEPTIC ALCOHOL OXYGENATED WATER POROUS ADHESIVE TAPE GAUZE COTTON BANDAGE (1 TRIANGULAR -1 LONGITUDINAL) SCISSORS ANALGESICS (PARACETAMO IBUPROFEN) GLOVES
FLASHLIGHT	LED TYPE
SAFETY TRIANGLES 2 UNITS	2 UNITS 50 CM EACH SIDE FLUORESCENT SURFACE ABS MATERIAL RED REFLECTIVE PLATE POLYETHYLENE BASE (WEIGHT 2KG)



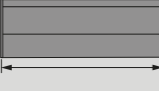

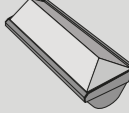


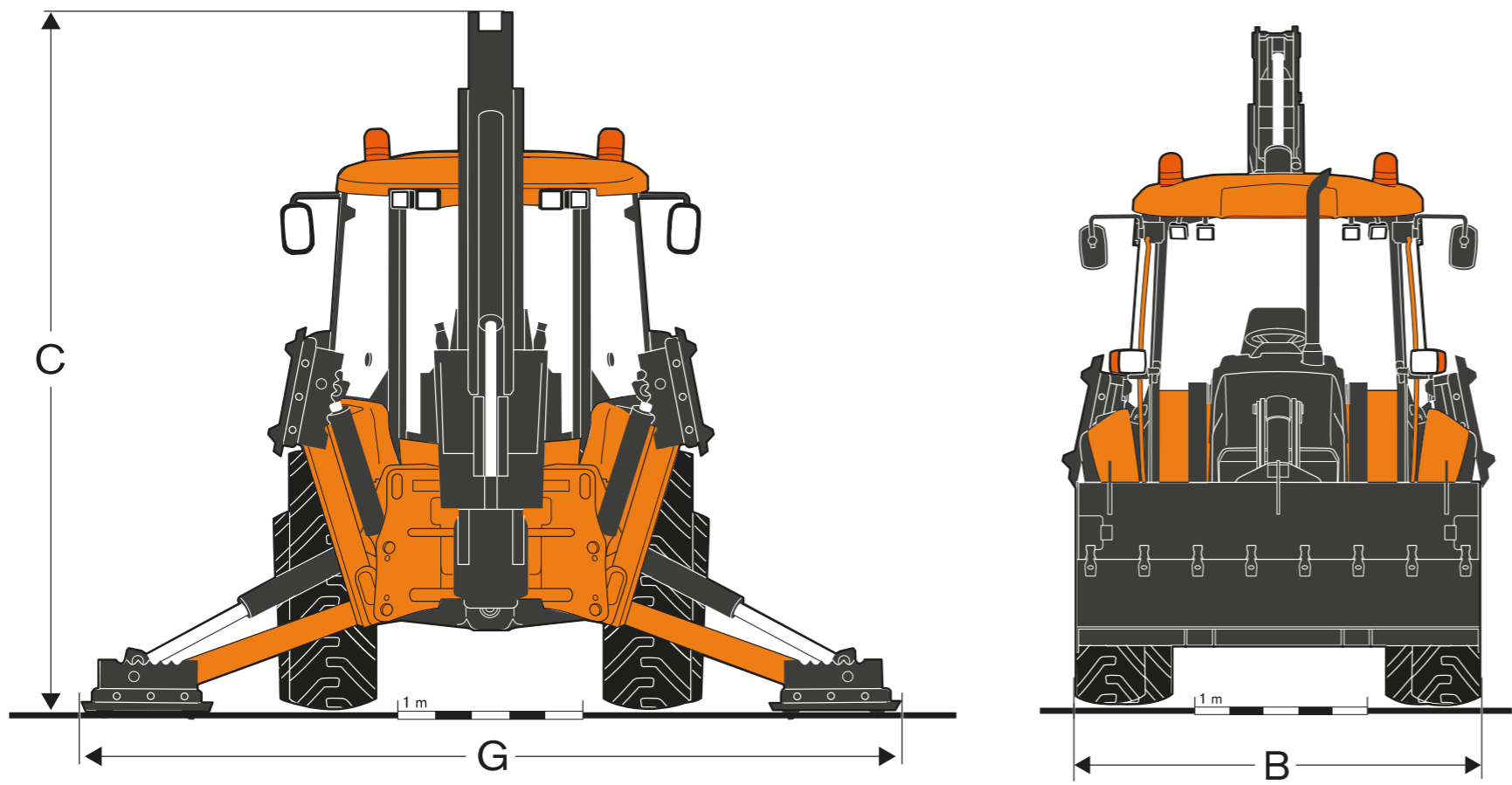


Dimensions


- A Long
- B Width
- C Height
- D Distance between axis
- E Ground clearance
- F Height to top of cab
- G Width between outriggers
- H Distance from front axle to bucket edge

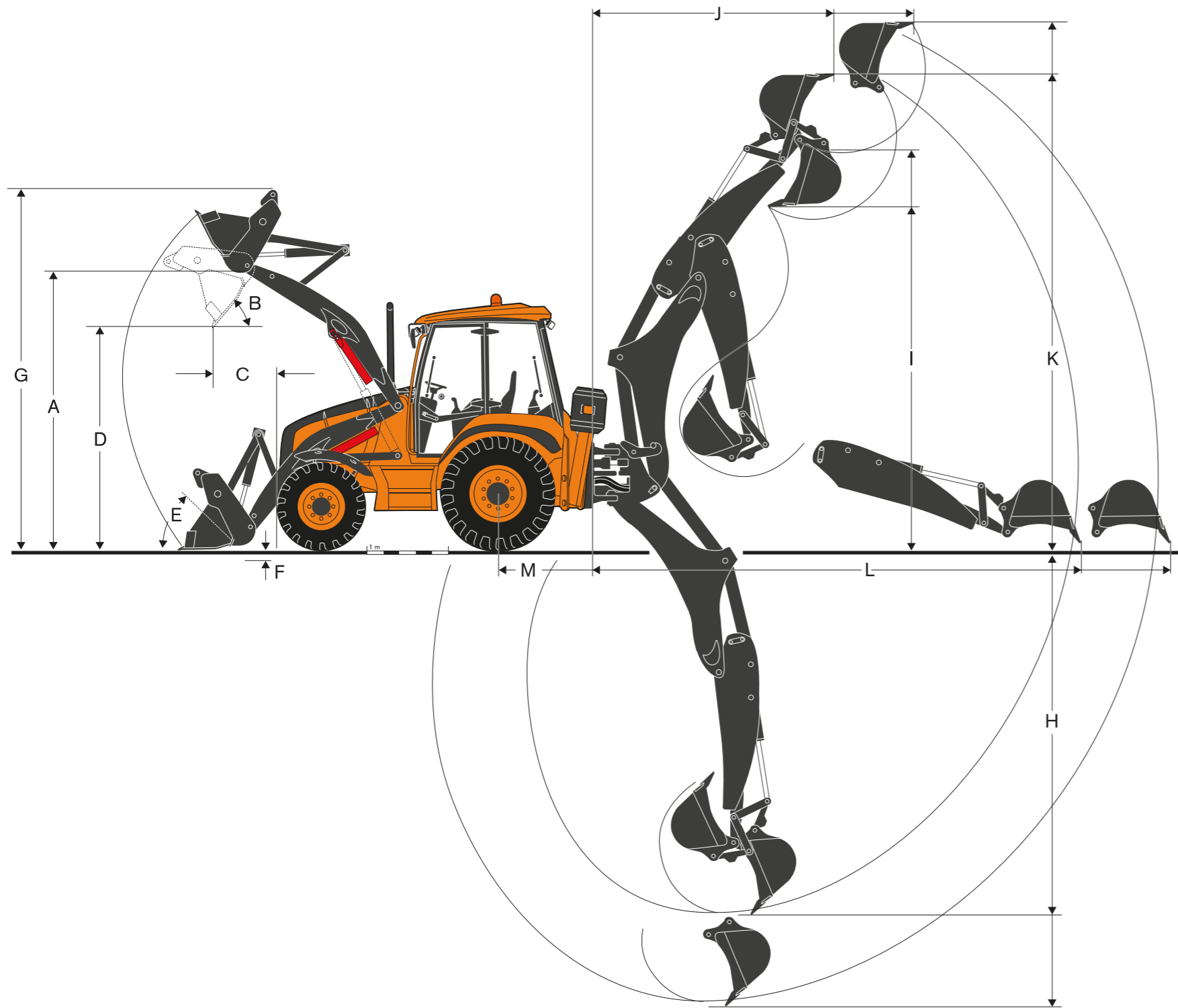
Loader buckets

			
overall bucket	mm 2 250	kg 345	m ³ 0,8
overall bucket	mm 2 350	kg 475	m ³ 1,0
multipurpose spoon	mm 2 350	kg 790	m ³ 1,0



excavator buckets

				
	brad	weight	ability	No. of teeth
Vintage spoon for general purpose	mm 310	kg 97	m ³ 0,08	3
	mm 410	kg 105	m ³ 0,11	3
	mm 450	kg 115	m ³ 0,13	4
	mm 625	kg 130	m ³ 0,19	4
Vintage spoon for Heavy service	mm 925	kg 137	m ³ 0,29	5
	mm 310	kg 125	m ³ 0,09	3
	mm 465	kg 147	m ³ 0,14	4
	mm 625	kg 174	m ³ 0,20	5
Vintage spoon for ditches	mm 765	kg 198	m ³ 0,33	6
	mm 925	kg 222	m ³ 0,33	6
Vintage spoon for ditches	mm 1 200	kg 135	m ³ 0,17	0
	mm 1 500	kg 158	m ³ 0,21	0



Loader Dimensions

A	Height to Bucket Pivot Pin	m	3,35	
B	Tilt angle		51	
C	Discharge range to a 45°	m	1,03	
D	Tipping height a 45°	m	2,78	
E	Bucket kick angle, at ground level	°	46	
F	Digging depth	m	0,29	
G	Maximum operating height	m	4,14	
	Max leveling angle	°	117	

Backhoe Dimensions

H	Digging depth	m	4,45	
I	Loading height	m	3,72	
J	Load range maximum height	m	2,51	
K	Operating height	m	5,81	

