



BACKHOE

RE710-PS





BACKHOE EXTENDABLE ARM

AMOUNT	2
BRAND	YANWA
MODEL	RE710-PS
YEAR OF PRODUCTION	2023
ORIGIN	CHINA
OPERATIONAL WEIGHT	7500KG

STANDARD DIMENSIONS

LENGTH (LOADER TO GROUND)	7245MM
FULL WIDTH WITHOUT MAGAZINE	2430MM
TRANSPORT HEIGHT	3631MM
DISTANCE BETWEEN AXIS	2200MM

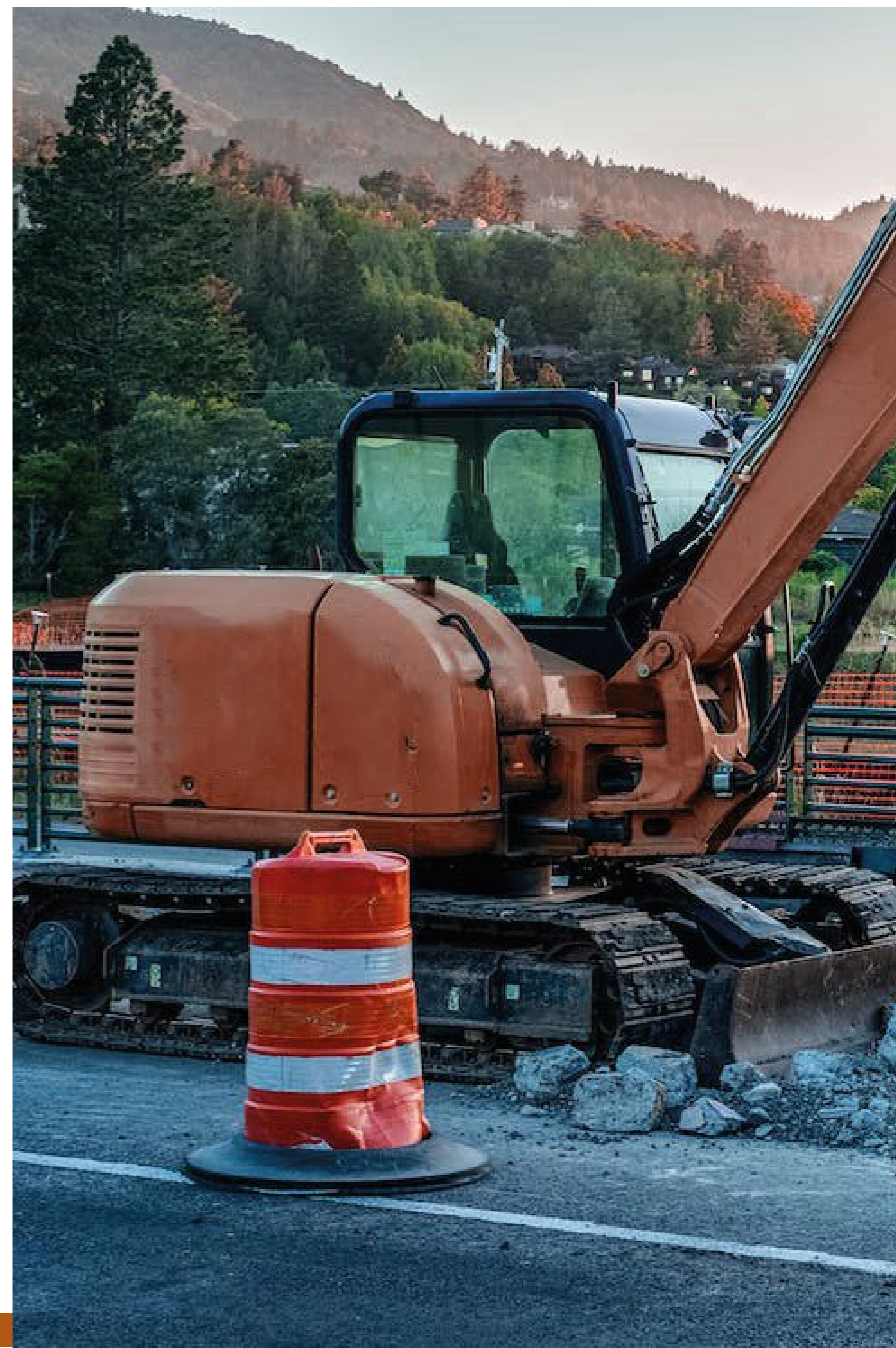
DIRECTION SYSTEM

TYPE	FRONT - POWER STEERING / HYDROSTATIC
------	---



ENGINE

BRAND	CUMMINS
MODEL	QSB4,5-C110
GUY	4-STROKE INTERNAL COMBUSTION
FUEL	DIESEL
NET POWER	110HP
OPERATING REGIME	2200RPM
DISPLACEMENT	4.5L
EMISSIONS SYSTEM	TIER 3
CYLINDER CAPACITY	4500CC
MAXIMUM TORQUE (TORQUE)	49.7 KGF.M/488 NM @ 1500 RPM
NUMBER OF CYLINDERS	4 IN LINE
INJECTION SYSTEM	HIGH PRESSURE (COMMON RAIL)
AIR SUPPLY	TURBOCHARGED
ADDITIONAL FUEL FILTER	INSTALLATION OF AN ADDI- TIONAL FUEL FILTER SYSTEM IS INCLUDED - TYPE AK
FUEL TANK CAPACITY	140 LITERS
REFRIGERATION	WATER





CABIN

CABIN	CLOSED
TYPE	ROPS (ISO 3741) / FOPS (ISO 3449)
A/C	INCLUDES
ERGONOMIC / ADJUSTABLE SEAT	INCLUDES
SEAT BELT	INCLUDES
LOCKS AGAINST VANDALISM	INCLUDES
RADIO (BLUETOOTH+USB+AM/FM)	INCLUDES
NOISE INSIDE THE CABIN	72.3DB(A)
NOISE OUTSIDE THE CABIN	82.4DB(A)

DASHBOARD - INCLUDES

TACHOMETER	INCLUDES
HYDROMETER	INCLUDES
HOUR METER	INCLUDES
SPEEDOMETER	INCLUDES
TEMPERATURE METER	INCLUDES
WARNING LIGHTS	INCLUDES

TRANSMISSION

TRACTION	4WD (4X4)
TYPE	POWER SHUTTLE
SPEEDS	4 FORWARD / 4 REVERSE
TOP SPEED 1ST (FORWARD /REVERSE)	6KM/H
MAX SPEED 2ND (FORWARD /REVERSE)	9.5 KM/H
3RD MAX SPEED (FORWARD/ REVERSE)	19.9 KM/H
TOP SPEED 4TH (FORWARD/ REVERSE)	40.1KM/H
TRACTION CONTROL	MANUAL
TRANSMISSION TYPE	HYDROSTATIC / ASSISTED
REAR DIFFERENTIAL	HYDRAULIC LOCK INCLUDES CABIN BUTTON ACTIVATION

BRAKES

SERVICE BRAKE	MULTIPLE DISC - OIL BATH SELF ADJUSTING BUILT INTO REAR AXLE HYDRAULIC ACTUATOR
PARKING BREAK	POWERED WITH ELECTRIC SWITCH DIFFERENTIAL LOCK

HYDRAULIC SYSTEM

PUMP TYPE	DOUBLE GEAR PUMP
MAIN RELIEF PRESSURE	24MPA
FLOW (PUMP FLOW)	163 L/MIN
TYPE OF SYSTEM	OPEN CENTER
SYSTEM PRESSURE	254 KGF/CM2 (36411 PSI)
HYDRAULIC SYSTEM CAPACITY	110LT
DEPOSIT CAPACITY	70LT
LOADER AND EXCAVATOR DRIVE	MANUAL LEVERS

WHEELS

FRONT	DIMENSIONS 14-17.5 CANVAS 14 (PLY) MAX LOAD 3875KG
LATER	DIMENSIONS 19.5L-24 CANVAS 14 (PLY) MAX LOAD 3540KG

EXCAVATOR ARM

TYPE	HYDRAULIC	BREAKOUT FORCE	BUCKET: 6210 KGF / 60.9KN
EXTENDABLE ARM	INCLUDES	EXTENDABLE ARM	ARM: 3682 KGF / 36.1 KN
CONTROLS	UNIVERSAL HAND LEVER	EXTENDED	
STANDARD DIGGING DEPTH	4360MM	BUCKET ANGLE OF ROTATION	205°
DIGGING DEPTH EXTENDABLE ARM RETRACTED	4402MM	ARC OF ROTATION	180°
DIGGING DEPTH EXTENDED EXTENDED ARM	5500MM	AUXILIARY HYDRAULIC LINE FOR HYDRAULIC ACCESSORIES	INCLUDES
REACH FROM ROTATION PIVOT	5618MM	LOCK AND UNLOCK THE BOOM	LEVER/CABLE MECHANICAL SYSTEM
REACH FROM PIVOT ARM RETRACTED	5657MM		ACTIVATION FROM CABIN
REACH FROM KINGPIN ARM EXTENDED	6660MM		
BUCKET CAPACITY (ISO 7451 STANDARD)	0.2 M3		
BUCKET WIDTH	610MM		
NUMBER OF TEETH	5		
REACH FROM PIVOT CENTER	5443MM		
DIGGING HEIGHT WITH ARM RETRACTED	5550MM		
DIGGING HEIGHT AT ARM EXTENDED	6302MM		
STANDARD BUCKET BREAKOUT FORCE	6292 KGF / 61.7 KN		
BREAKOUT FORCE EXTENDABLE ARM RETRACTED	BUCKET: 6210 KGF / 60.9 KN ARM: 4364 KGF / 42.8 KN		

CHARGER

TYPE	HYDRAULIC
------	-----------

BLADE	ATTACHED TO BUCKET WITH BOLTS
-------	-------------------------------

CONTROLS	LEVER
----------	-------

LOADER BUCKET CAPACITY	1.0 M3
------------------------	--------

BUCKET BREAKOUT FORCE	6500KGF
-----------------------	---------

FULL HEIGHT LIFT CAPACITY	3500KGF
---------------------------	---------

BUCKET WIDTH	2406MM
--------------	--------

MAX DUMP ANGLE	45° (FULL HEIGHT)
----------------	-------------------

DISCHARGE HEIGHT	2604 MM (MAX ANGLE 45°)
------------------	-------------------------

PIN LOADING HEIGHT	3428MM
--------------------	--------

DIGGING DEPTH	150MM
---------------	-------

INCLUDES	LOADER BUCKET CLIP KIT WITH COUPLING BOLTS AND NUTS
----------	---

ELECTRIC SYSTEM

VOLTAGE	12 VOLT
---------	---------

BATTERY CAPACITY	95 AH
------------------	-------

ALTERNATOR	150A
------------	------

ELECTRICAL SYSTEM - INCLUDES

WORK LIGHTS (4 FRONT LED LIGHTS / 4 REAR LED LIGHTS)	INCLUDES
--	----------

HIGHWAY TRAFFIC LIGHTS	INCLUDES
------------------------	----------

TAIL LIGHTS	INCLUDES
-------------	----------

ELECTRIC HORN	INCLUDES
---------------	----------

BACKUP ALARM	INCLUDES
--------------	----------

WIRING PROTECTIONS IN EXPOSED AREAS	INCLUDES
-------------------------------------	----------

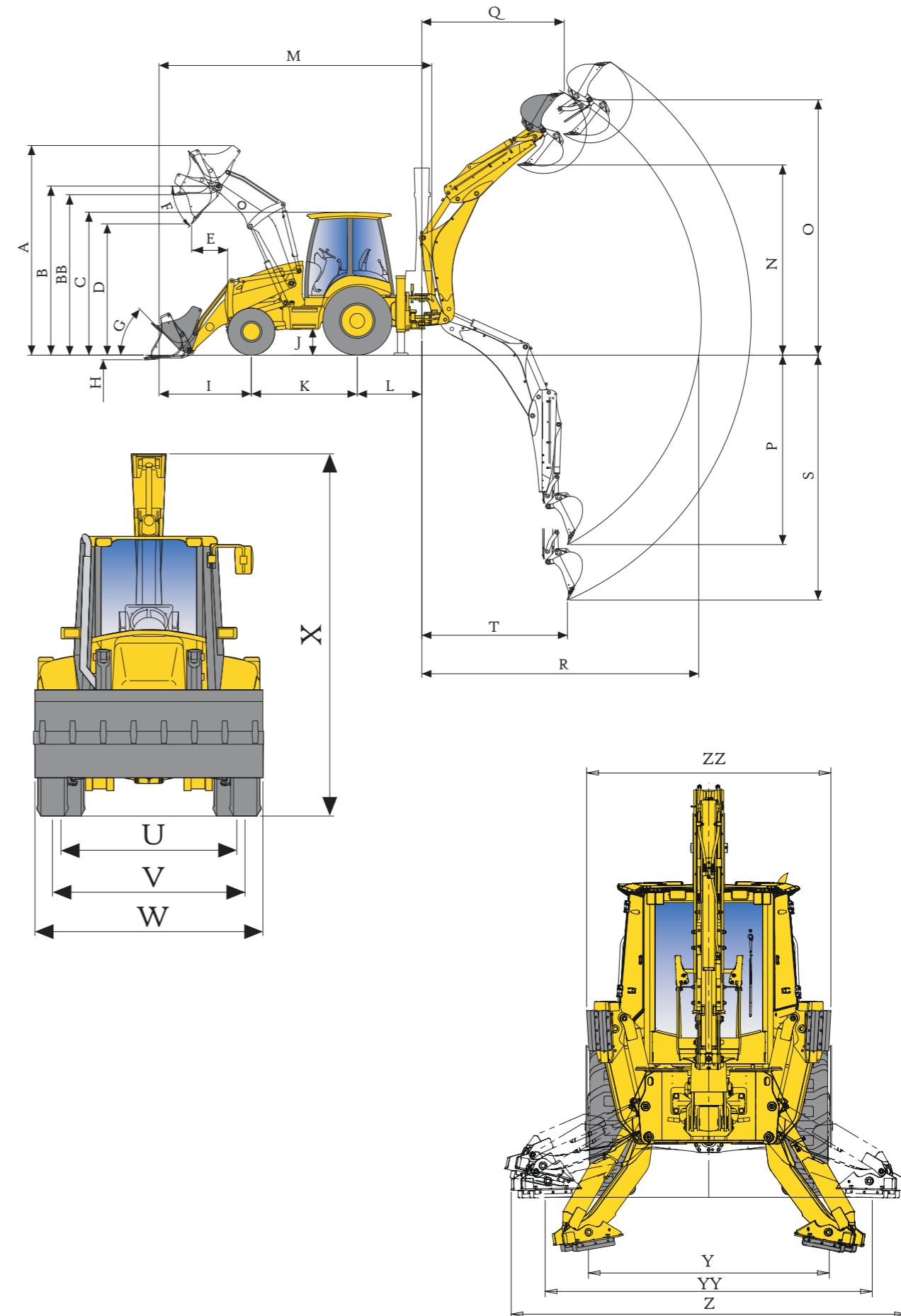
TOOLS (1 KIT PER ROAD TEAM, BACKHOE)

HYDRAULIC BOTTLE JACK	15 TON ACTION LEVER JACK KEY
TYPE I WHEEL WRENCH	32X30 FORCE LEVER
WHEEL LOCK STUDS (2 UNITS)	POLYURETHANE 6,2 KG 39,4X21,6X21 CM (LXAXH)
TOOLBOX	PLIERS SCREWDRIVER PHILLIPS SCREWDRIVER 10" SPANNER COMBINATION WRENCHES (10 TO 23)MM
EXTINGUISHER	PQS TYPE CLASS A,B,C FIRES 10 KG
MEDICINE CABINET	ANTISEPTIC ALCOHOL OXYGENATED WATER POROUS ADHESIVE TAPE GAUZE COTTON BANDAGE (1 TRIANGULAR -1 LONGITUDINAL) SCISSORS ANALGESICS (PARACETAMO IBUPROFEN) GLOVES
FLASHLIGHT	LED TYPE
SAFETY TRIANGLES 2 UNITS	2 UNITS 50 CM EACH SIDE FLUORESCENT SURFACE ABS MATERIAL RED REFLECTIVE PLATE POLYETHYLENE BASE (WEIGHT 2KG)



DIMENSIONS

- A maximum height
- B pin height
- BB max height forklift
- C cab height
- D max height download
- E max range discharge (45°)
- F discharge angle
- G pickup angle
- H digging depth
- I bucket reach (transport)
- J ground clearance
- K distance between axis
- L backhoe swing center distance
- M transport length
- N SAE dump height max height download
-with extended telescopic SAE
- with telescopic max.
- O digging height -with extended telescopic
- P SAE digging depth -with extended telescopic
- Q reach at maximum height - with extended telescopic
- R max range from the center of rotation - with extended telescopic
- S digging depth - with telescopic arm
- T digging reach
- U distance between rear wheels
- V distance between front wheels
- W overall width (with bucket)
- X backhoe transport height - with telescopic
- Y center distance with stabilizers - fully extended
- YY distance from the center of the stabilizers
- Z distance from the outside of the stabilizers
- ZZ overall width (with bucket)



Quando se utilize la máquina para operaciones de manejo de objetos, la parte de la retroexcavadora debe estar equipada con válvulas de seguridad (aguilón, brazo y dispositivo de advertencia de sobrecarga) de acuerdo con la norma EN474-5 y debe operar conforme a las regulaciones locales relacionadas.



YANWA
PROFESSIONAL MACHINERY

YANWA
PROFESSIONAL MACHINERY

YANWA
PROFESSIONAL MACHINERY

YANWA
PROFESSIONAL MACHINERY